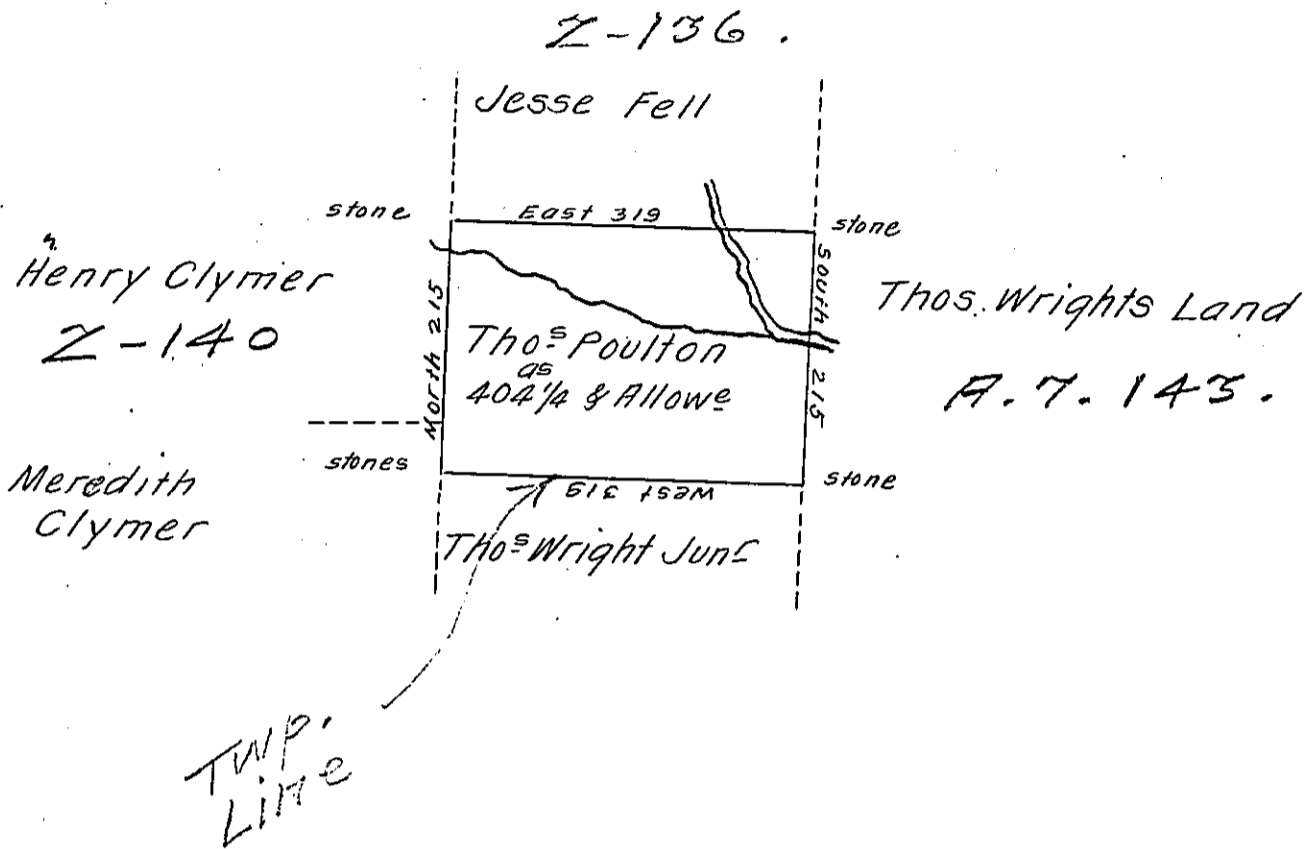


Deitson -
Luzette



A Draft of a tract of land called — Situate on the Waters of Lehi-
 Joining land Surveyed For Thos Wright Junr and Others in the
 county of Luzerne containing four hundred and four acres $\frac{1}{4}$ and
 Allowance of Six & Cent for Roads &c. Surveyed [Thos Poulton
 the 1st Day of July 1792 in Pursuance of a warrant dated the 4th
 Day of April 1792.

to

by

Dan^l Brodhead Esq^r
 Surv^r Gen^l

W^m Gray D.S.

IN TESTIMONY that the above is a copy of the original remaining on file in
 the Department of Internal Affairs of Pennsylvania, made
 conformably to an Act of Assembly approved the 16th day of
 February, 1833, I have hereunto set my Hand and caused
 the Seal of said Department to be affixed at Harrisburg,
 this eleventh day of October 1910.

Henry Honck
 Secretary of Internal Affairs.